

Privacy & Security with Ambient IQ



We know you can't deliver great care without confidence that your tools are safe, secure, and HIPAA-compliant. That's why every feature of Ambient IQ is designed with privacy, security, and compliance at the core.

Ambient IQ Security

HIPAA-Compliant by Design

Ambient IQ is built to meet HIPAA standards, from encrypted recordings to secure data storage.

Powered by Microsoft Azure

Your data lives in world-class, HIPAA-compliant data centers with enterprise-grade reliability and uptime.

Made for Clinicians

We never use your patients' protected health information (PHI) to train our AI.

Employee Safeguards

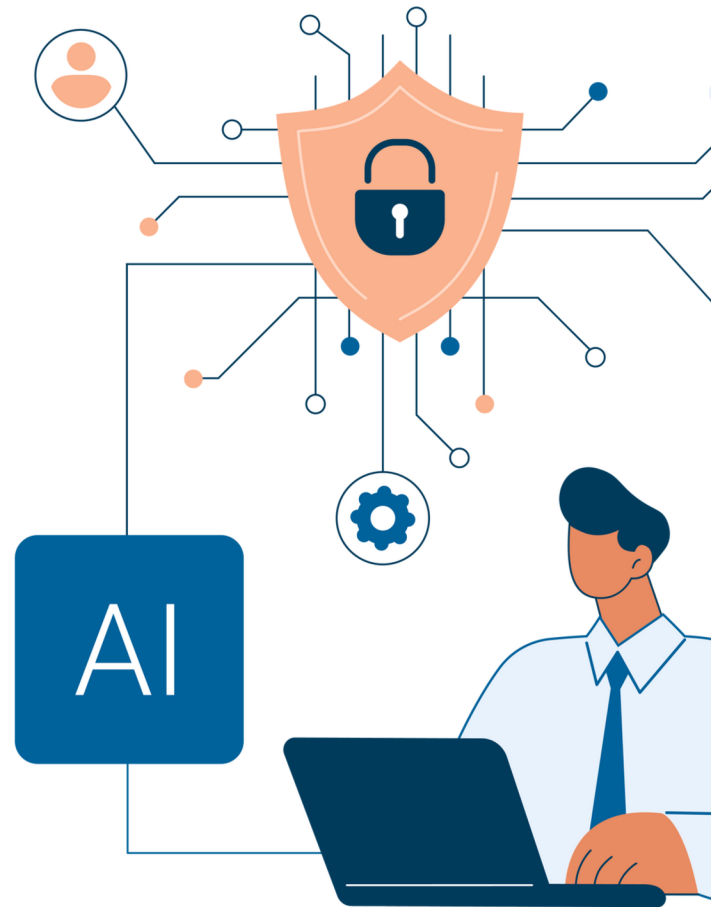
Every team member passes background checks and receives annual HIPAA & security training.

Ongoing Testing

We perform penetration testing and vulnerability scans to identify and fix risks before they can affect you.

Trusted Partnerships

All vendors handling PHI are HIPAA-compliant and sign Business Associate Agreements (BAAs).



How We Keep Your Data Safe

End-to-End Encryption

All data is encrypted in transit and at rest, using industry-leading standards.

Strict Access Controls

Only authorized team members can access PHI, and access is limited to what's absolutely necessary.

Automatic Deletion

Patient recordings are only stored for a period of two weeks. They are then automatically deleted.